

CHONJU

KOCHANG

PUSAN

HAMYANG

AMH

NAMWON

Nam River

Se m i j i h
River

CHINJU

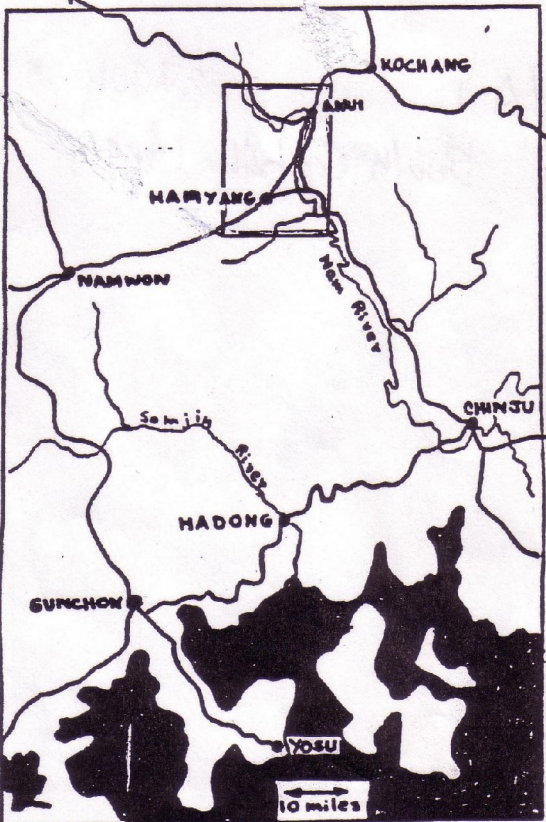
PUSAN

HADONG

GUNCHON

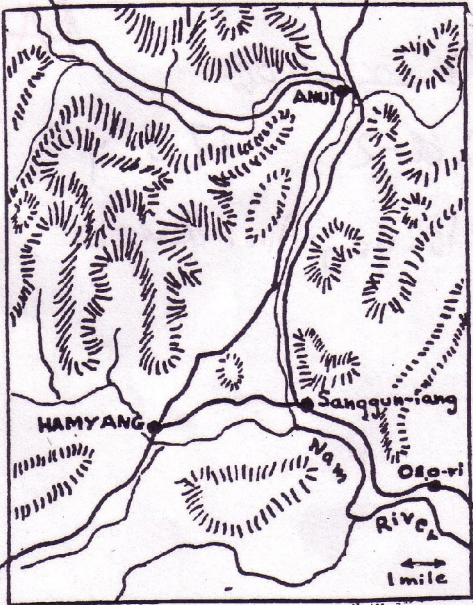
Yosu

10 miles



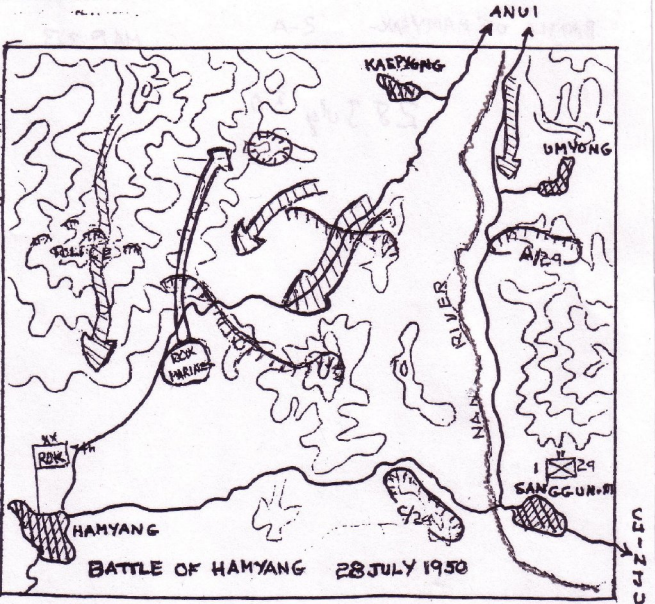
CHONJU

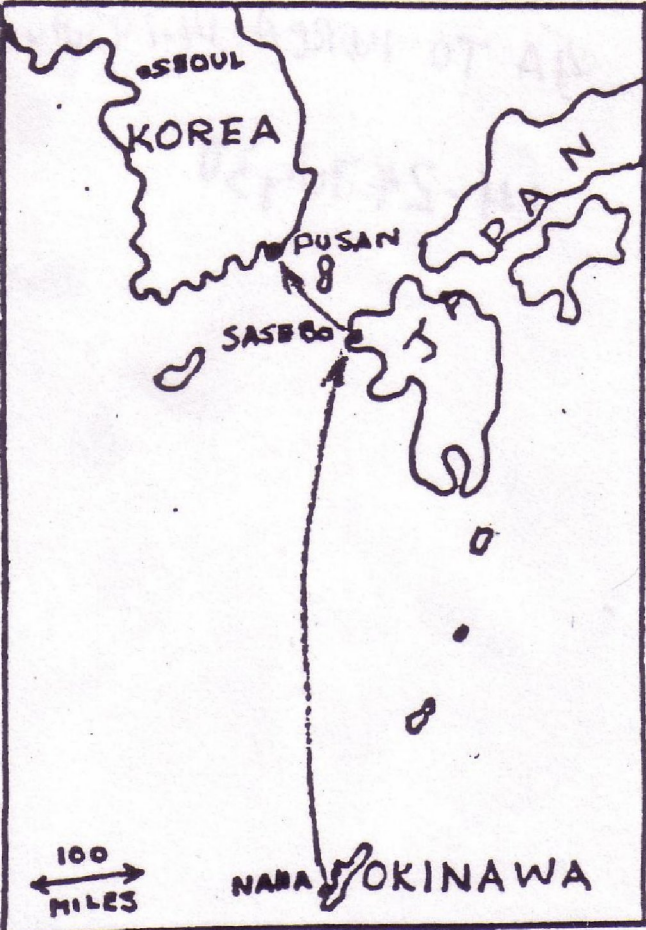
KOCHANG



Z4330Z

1 mile





SEOUL
KOREA

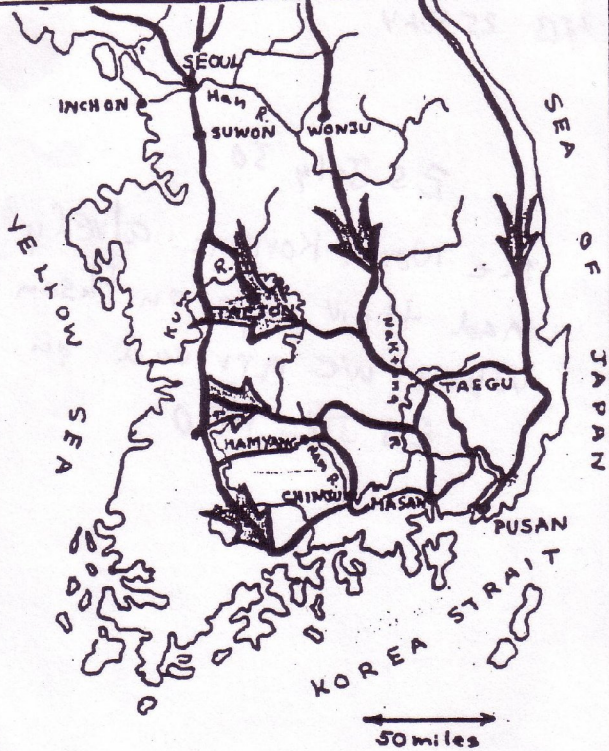
PUSAN

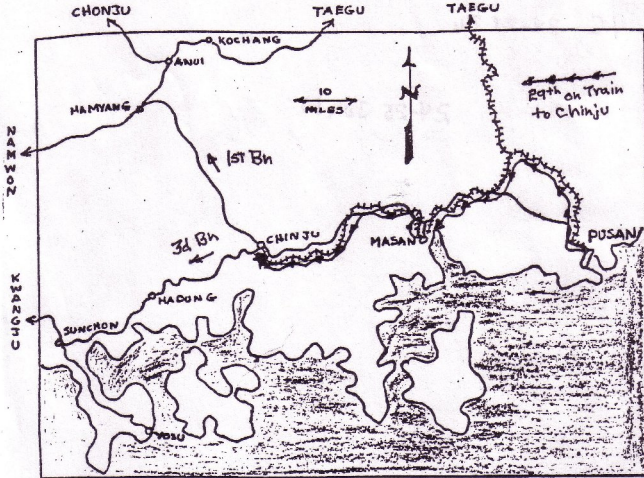
SASEBO

NARA OKINAWA

100
MILES

N



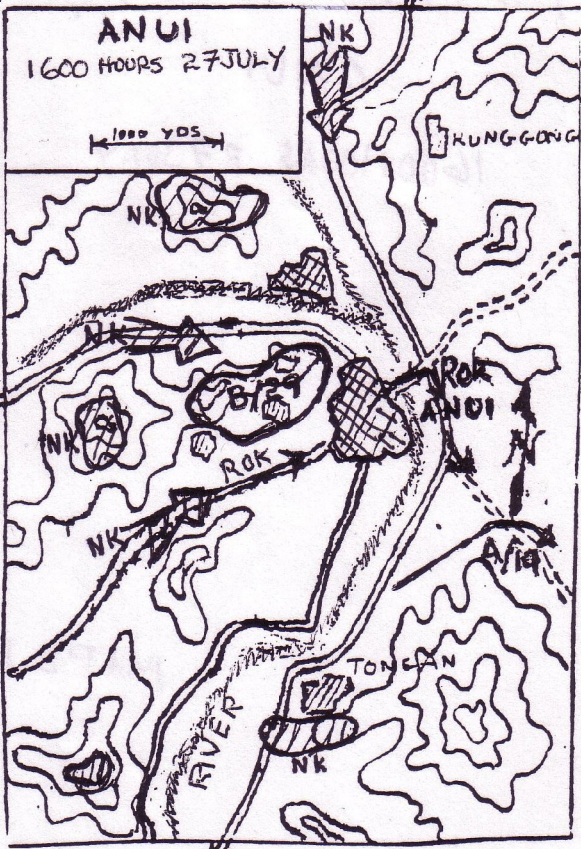


KOCHANG

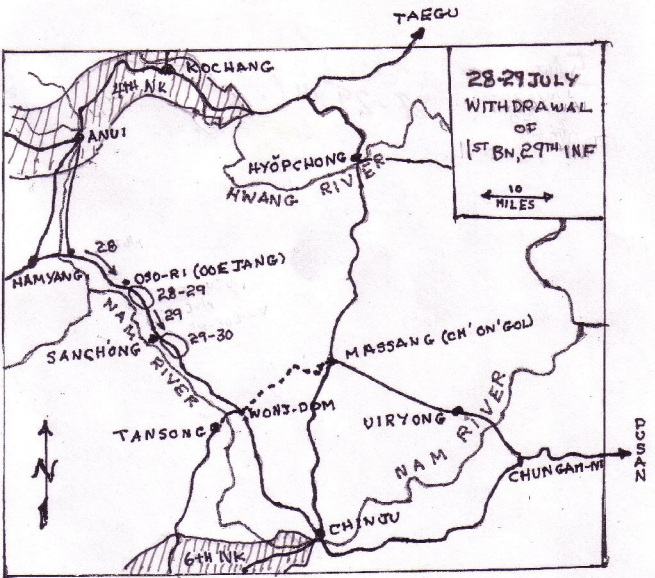
ANUI
1600 HOURS 27 JULY

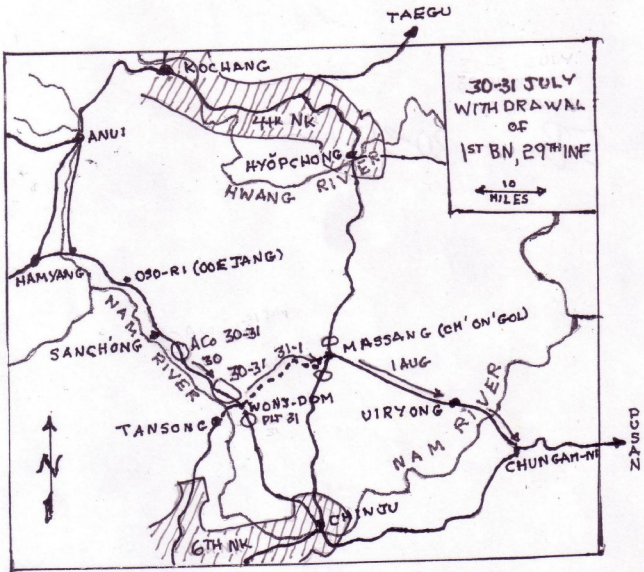
1000 YDS

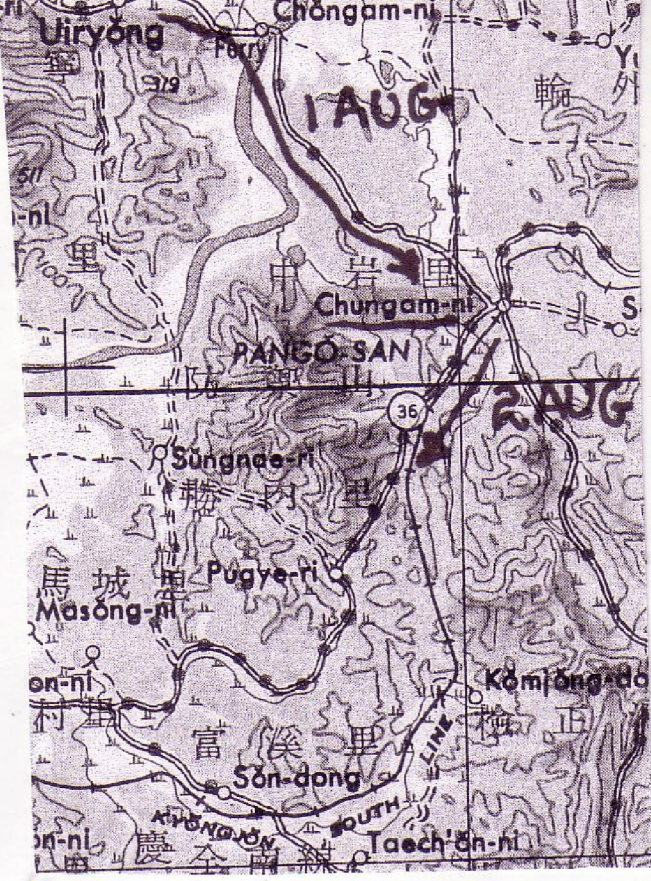
542020



CHINJU



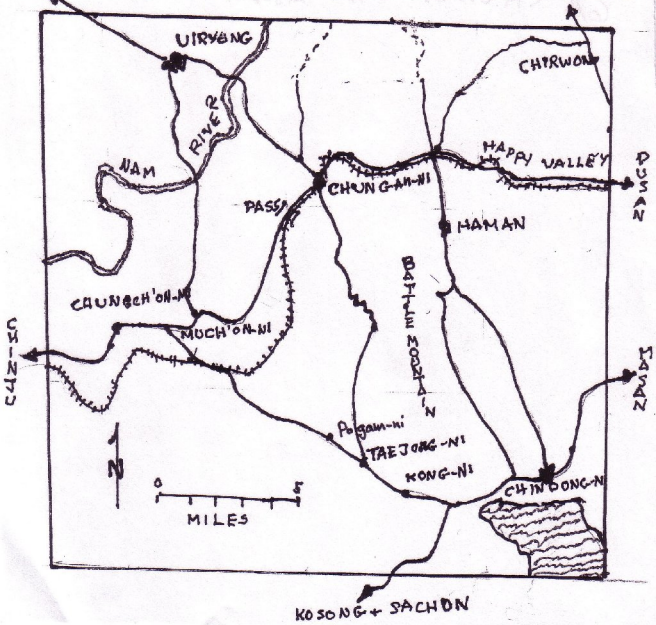




MASSANG

CHUNGAM-NI AREA

NAKTONG-RIVER

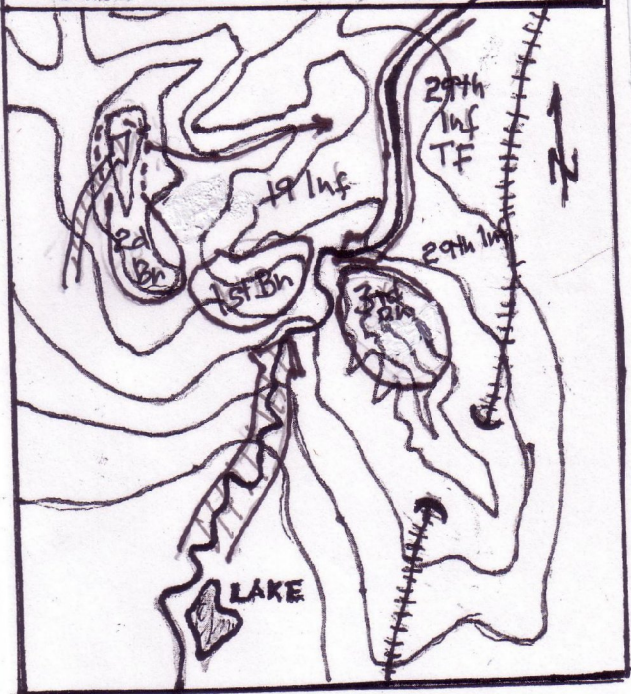


CHUNGAM-NI PASS

"The Notch"

Chungam-Ni

0830 2 AUGUST 1950



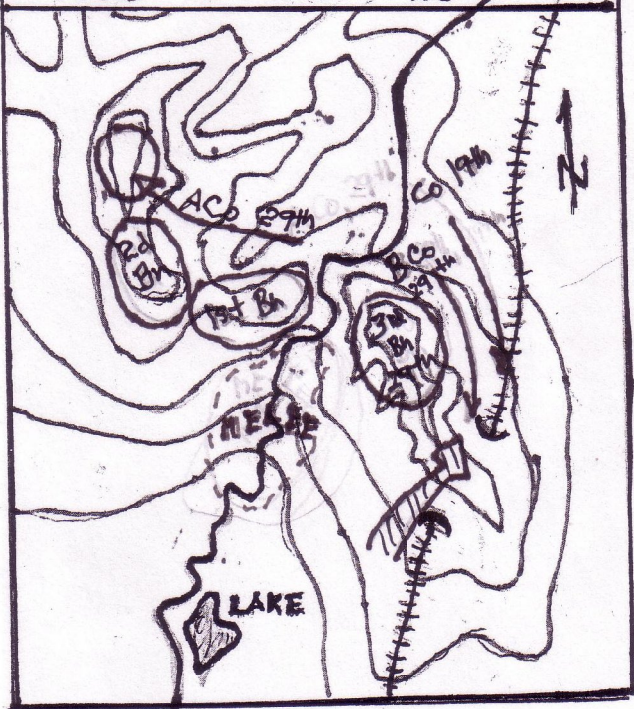
CHINTO

0 500 1000 YARDS

CHUNGAM-NI PASS

"The Notch" Chungam-Ni

1300 2 AUGUST 1950



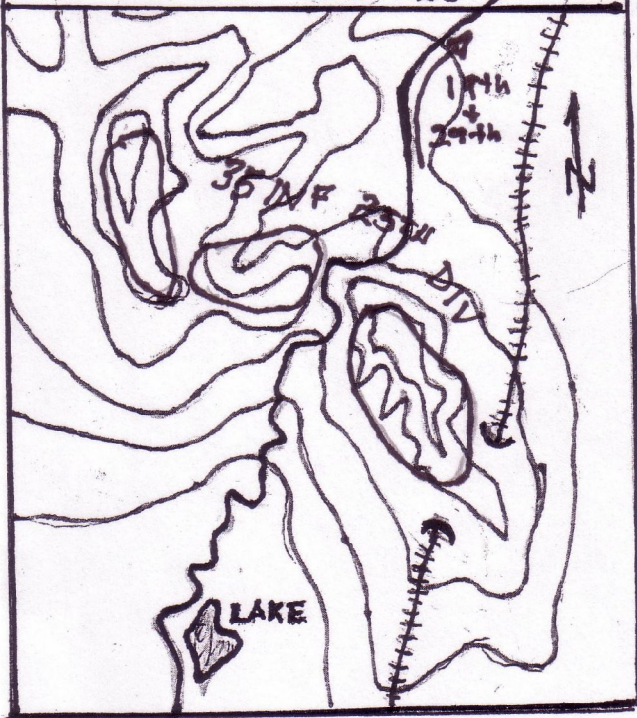
CHINJO

0 500 1000 YARDS

CHUNGAM-NI PASS

"The Notch" chungam-ni

1600 2 AUGUST 1950



CHINJO

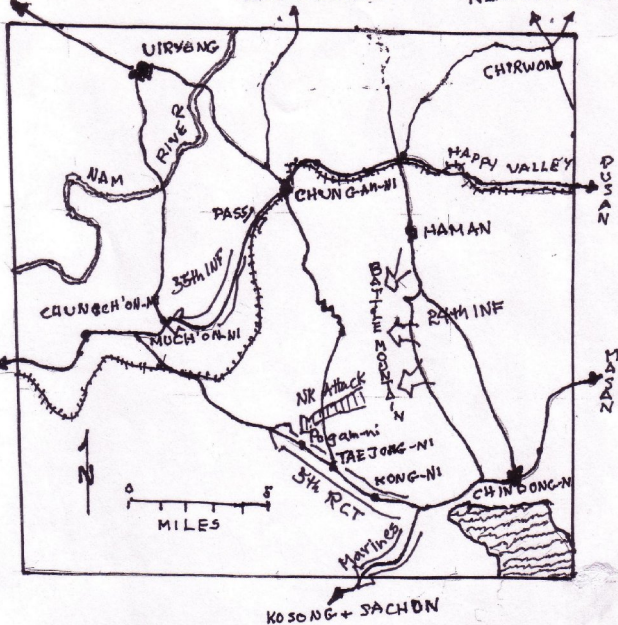
0 500 1000 YARDS

TASK FORCE KEAN 7-13 AUG

MASSANG

NAKTONG RIVER

NAKTONG RIVER



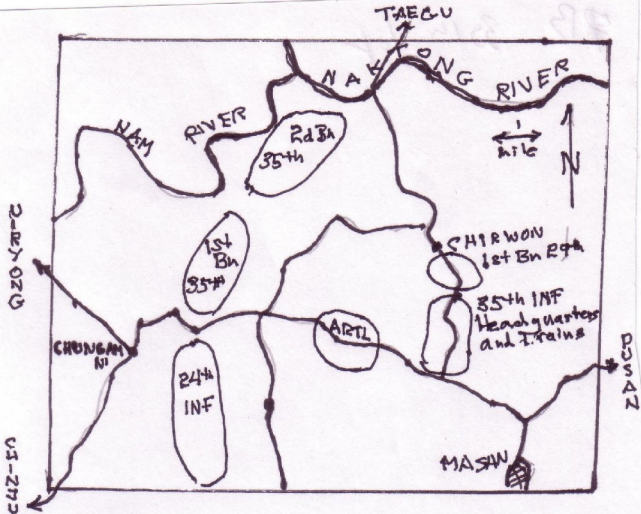
US-275

PUSAN

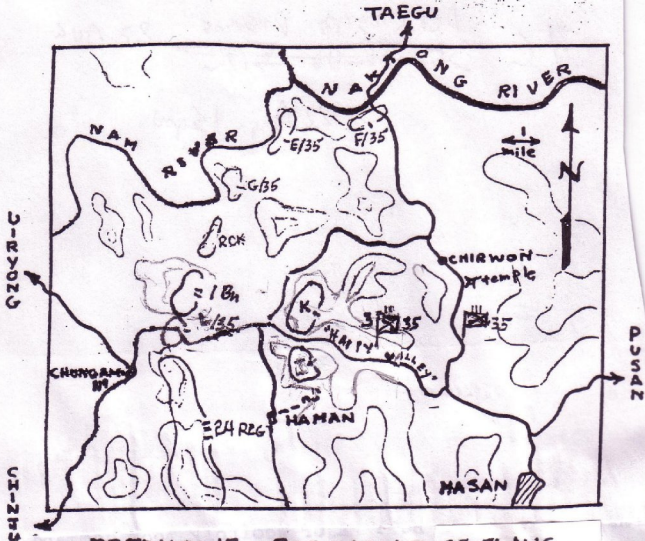
N

0 5
MILES

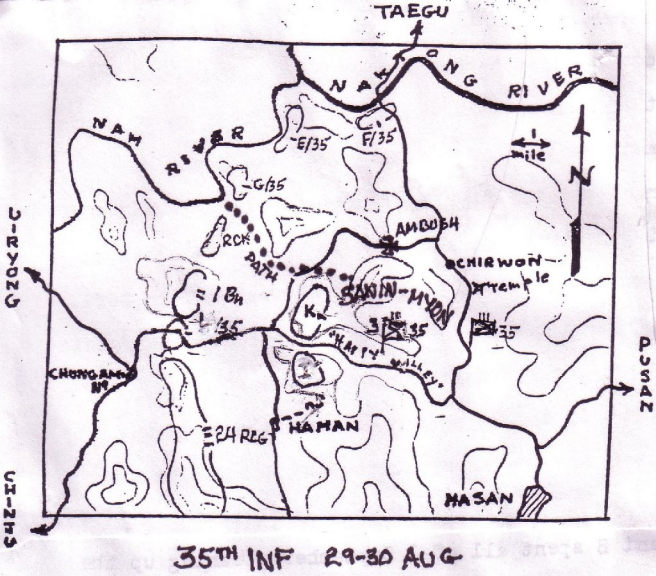
KOSONG + SACHON



35TH INFANTRY: 13-22 AUGUST



DEFENSIVE POSITIONS 25-31 AUG



MANEUVERS



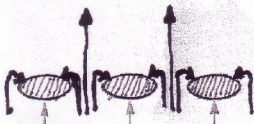
PENETRATION



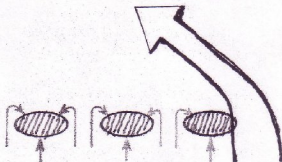
**ENVELOPMENT
by flank**



**ENVELOPMENT
by air mobility
or infiltration**



**INUNDATION
as main attack**



**INUNDATION
as secondary attack**



Chungsam-ni

PANGŎ-SAN

Taegang-ni

Kabang-ni

Chuk-san-dong

Changjae-ri

Hach'on-ni

Songdae-ni

Pogyeri

22 SEPT

CHINJU

CHANGGUNDAE-SAN

MINE

song-ni

Kamjong

Hap'yong-dong

Sangong-ni

28 SEPT

Son-dong

FORD

NIGHT PATROL

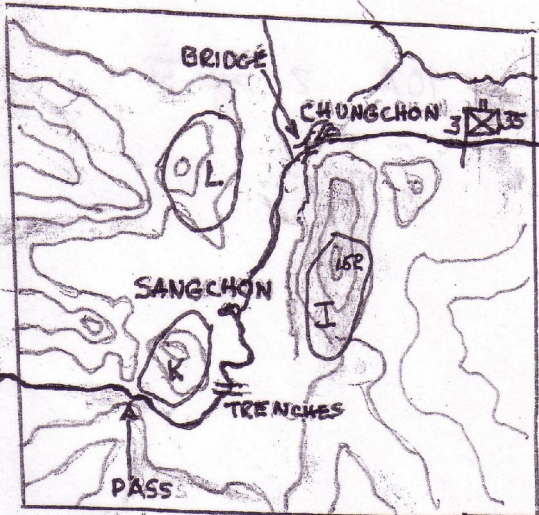
Ich'on-ni

Taech'on-ni

Kach'on-ni

Taech'on-ni

CG 3-55



DGSAN

PASS

TRENCHES

SANGCHON

CHUNGCHON

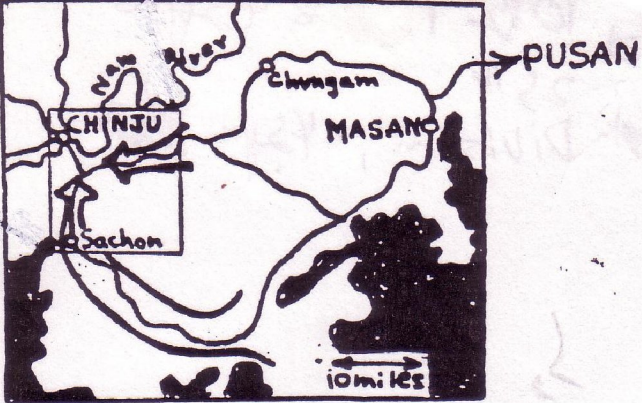
BRIDGE

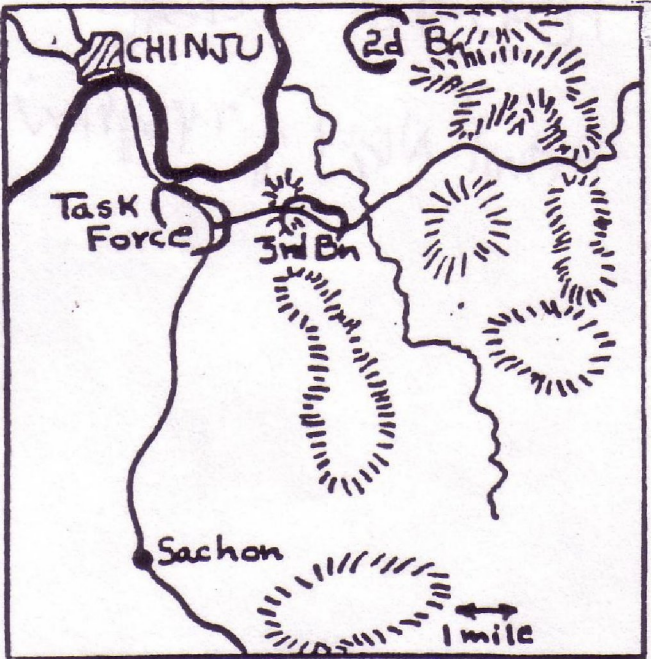
OL

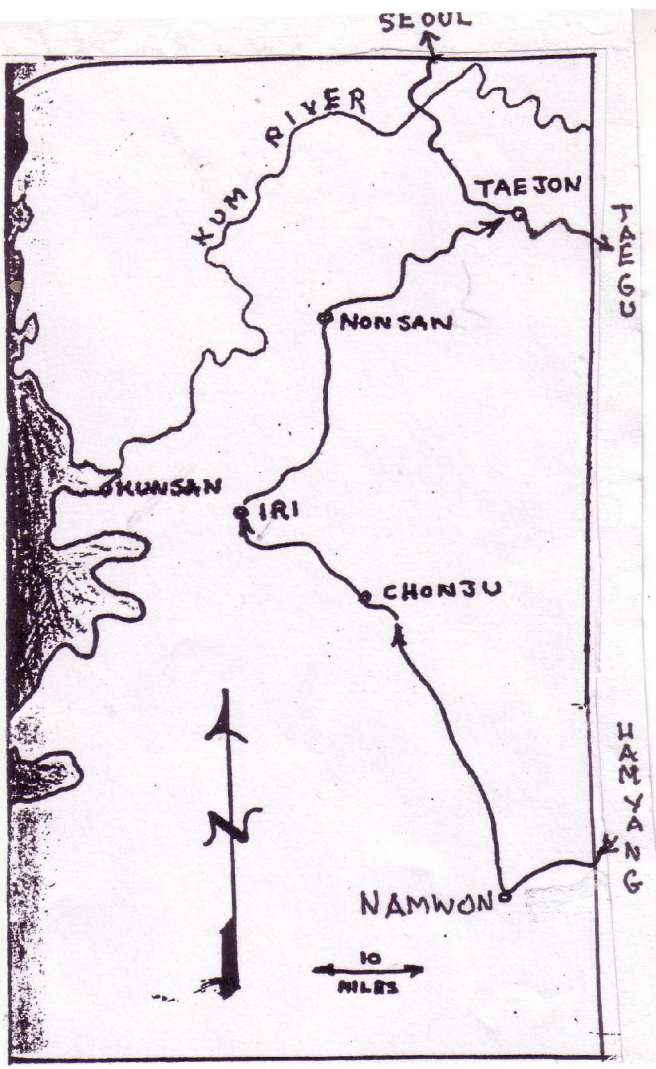
K

I

15R







SEOGW

CHUNGJU

10 miles

HANCHANG

TAEJON

OKCHON

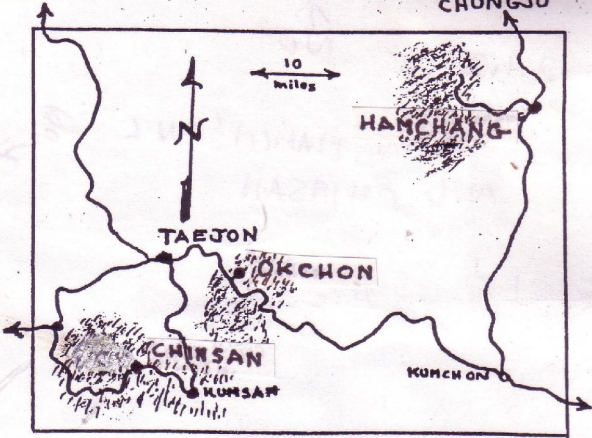
CHINSAN

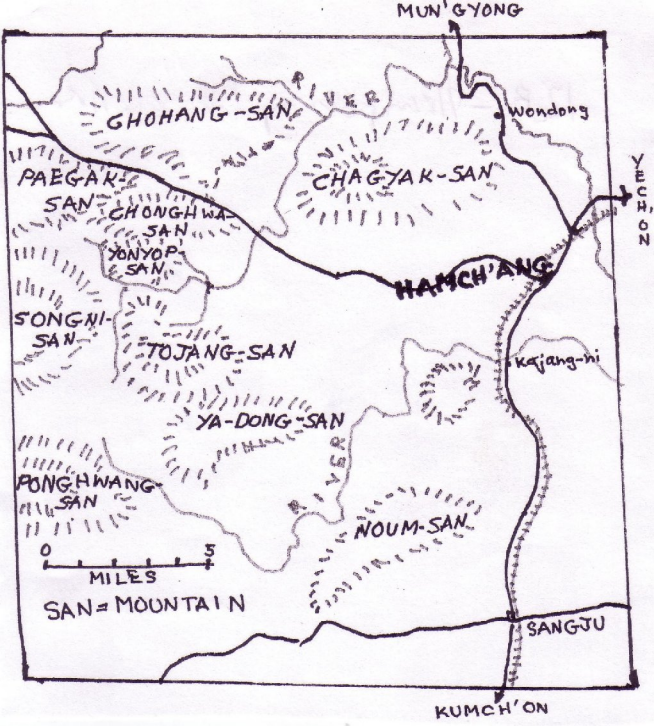
KUMSANG

KUMCHON

YONGSU

TAEJU







Korean Myo (shrine)

